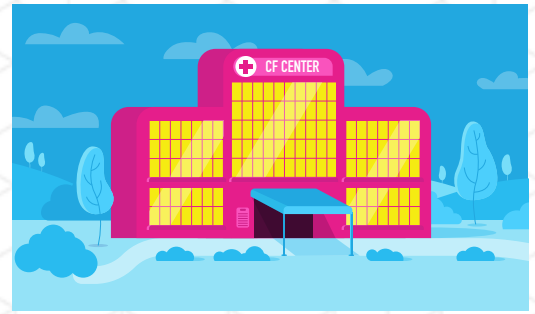


Organizing the transition to a NEW CYSTIC FIBROSIS (CF) CENTER

When moving from one CF Center to another, it helps to be organized and plan ahead. Use this checklist to help you keep track of the details and ease the transition.



MY CF CENTER TRANSITION TO-DO'S

- Put together a list of questions you may have for your current care team before transitioning. You can use the next page to get started.
 - Find a new CF Center that meets your specific needs in terms of both specialists (e.g., nutritionist, psychologist, or social worker) and services. Talk with the staff of your current CF Center to see if they can help by discussing which services or specialists are right for you.
 - Confirm that your insurance coverage will be accepted at the new facility, and let them know of any changes in care. If your insurance is not accepted, call your insurance company or talk to someone at your current CF Center for help.
 - Contact the new center to make an appointment. Some centers have introductory appointments for new patients. You may want to ask if your new center offers that kind of appointment.
 - Check that your medical records have been transferred to your new CF Center.
 - Put together a list of questions to ask your new care team on the next page. Here are a few questions to consider:
 - Will I see the same care team on each visit?
 - What's the best way to get in touch with my care team if needed when the CF Center is closed?
 - What resources are available to help me manage my care?
- For more questions, visit [EverydayCFCenter.com](https://www.everydaycfcenter.com)**
- Talk to your new care team about your appointment and lab test schedules to see how they may differ from your old center. Then you can set up recurring appointments, if available.



Not all CF Centers offer exactly the same services. Your child's current CF Center may provide adult care, or you might consider switching them from a pediatric center to an adult center. Ask your child's care team about that process.

CURRENT CARE TEAM QUESTIONS



NEW CARE TEAM QUESTIONS



Find more resources to help you navigate life with CF at [Everyday-CF.com](https://www.everyday-cf.com).

